

Internet of Things

Fuel Control Terminal

Automated fuel access and real-time fleet visibility

KEY FEATURES

- REST based API for robust security, communication, and scalability
- Intel™ Dual Core Processor
- Real-time pump and tank status, transactions, alerts
- Remote fueling authorization
- Remote diagnostics, updates, restart
- Custom fueling scripts
- EV charging station compatibility
- Extensible framework ensures future technologies compatibility
- Self registering for plug and play installation
- Instant or user controlled update timing
- Durable powder coat finish

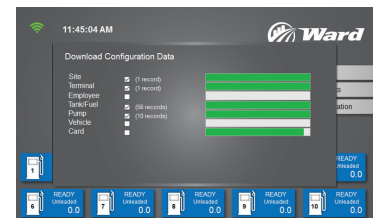
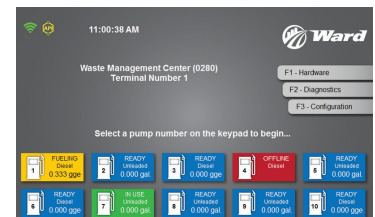
KEY VALUES

- 100% secure user accountability
- Fast, automated fueling access
- Controls multiple fuel and fluid hoses
- Broadcast or targeted messaging

Advanced connectivity

The IoT FCT communicates in real-time and is fully integrated and synchronized with Ward's Fuel View software.

Data-rich display screens include fuel dispensing volumes, and pump status indicators. The IoT FCT allows instant remote fueling authorizations, diagnostics and updates, as well as increased memory and storage capacity. Standard authorization methods are fully automated and 100% secure using Ward CANceiver™, Fuel Tag and Hose Module, or other access methods.




The IoT FCT interfaces with gasoline, diesel, CNG, propane, and any other fuel and fluid dispensing device, and electric vehicle charging stations; controlling up to ten fuel pumps or other fluid dispensers.

Industrial grade components and powder coat finish withstand the harshest environments, providing decades of dependable performance.

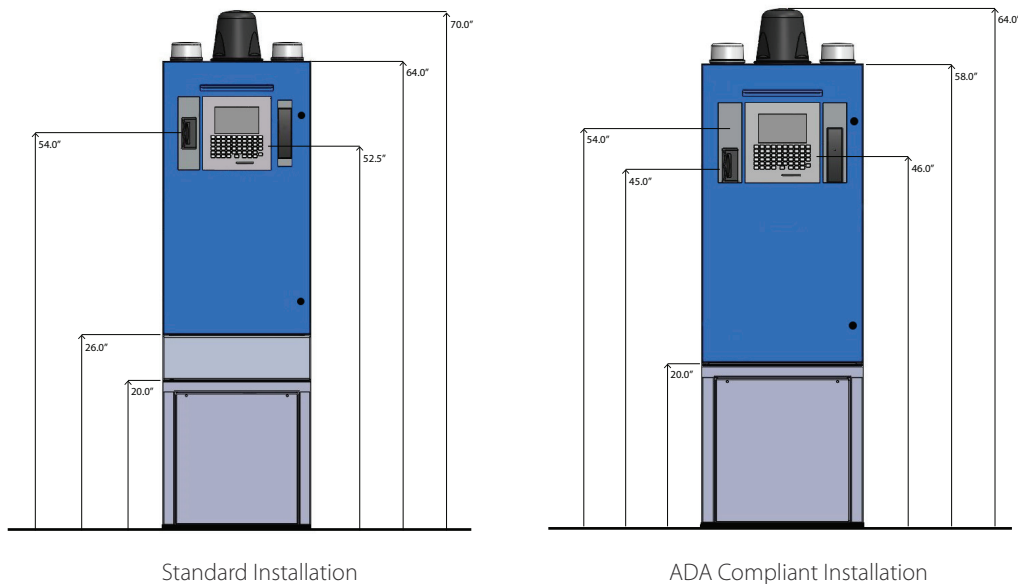


See our Capabilities Brochure for our Solutions Overview.

Specifications

Communication Options	REST based API; HTTPS/SSL; Cat5/6 - TCP/IP; Wi-Fi; hard wire; Cellular 3G / 4G - optional data plans available direct from Ward
Memory Processor	4 Gb RAM Intel® Atom™ E3827 dual core; 1.75 GHz core speed
Storage	64 Gb industrial grade mSata SSD (upgradeable) Optional TPM 2.0 security for enhanced storage encryption
Power	120 / 240 VAC; less than 2 Amps total current SBC battery back up and line conditioning
Display	7 inch graphic display screen (800 x 480 pixels) Readability in any light; automatic night light QWERTY keypad
Temperature Range	-40°C to 60°C industrial rated components
Dimensions*	20.5 x 11 x 71 in (52 x 28 x 180 cm) W x D x H
Certifications	 UL 1238 and CSA C22.2

* Dimensions may vary slightly.



Contact

ejward.com/contact/

