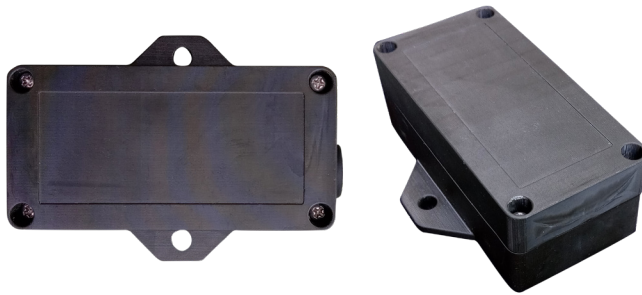


Lowers operating cost

Fuel Tag - RB

Secure access to primary fuels and secondary fluids



The Fuel Tag - RB provides reliable, consistent communication at the fuel pump to initiate fueling for fleet vehicles. Easily programmed, its unique ID ensures that only specified vehicles can access fuel and receive the correct fuel type and even volume.

The Fuel Tag - RB has been designed with a user-replaceable battery for lower operating costs and long-lasting value. When connected to a Ring Antenna, the Fuel Tag provides reliable, short-range communication for controlling access to fuel pumps.

The industrial-grade polymer resin casing features flame retardancy, functional toughness, strength, and long-term stability.

When equipped with the Hose Module, the Fuel Tag is compatible with Ward CANceivers™ and FCTs for the most comprehensive, protected solution for secure automated fueling.

KEY FEATURES

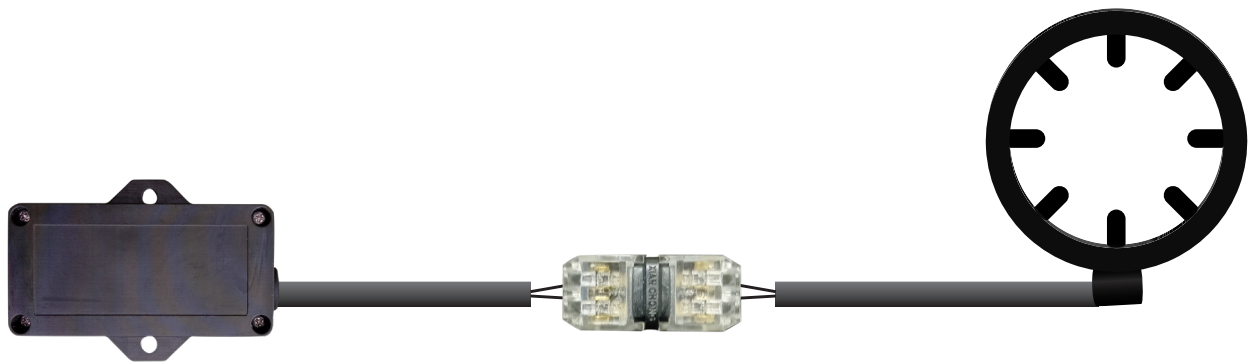
- Assures communication consistency
- Customer replaceable battery
- Multiple location options for installation either in or mounted on a protected area outside the vehicle
- Weather resistant, fire retardant casing

i See our Capabilities Brochure for our Solutions Overview.

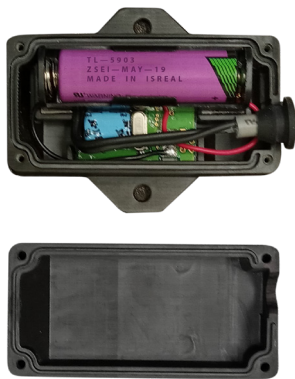
Specifications

Communication	EM wireless interface with the Hose Module and SimplyFuel Toolkit (SFT) programmer
Range	<i>SFT Programmer:</i> ~ 4 inches
	<i>Hose Module:</i> ~13 inches
	Communication range will vary with Ring Antenna size and surrounding environment
Power	Replaceable 3.6V AA Lithium Ion battery (Tadiran 5903/S)*
Temperature	-40° F to +185° F (-40° C to +85° C)
Dimensions	3 x 1.5 x 1 inches (W x D x H)
	76.2 x 38 x 25.4 mm
Antenna	The Fuel Tag works with all Ward vehicle ring antennas
Housing	Polymer resin

i IMPORTANT: Use only 3.6V AA Lithium batteries. Other batteries will not work.



Connecting the Fuel Tag with the Ring Antenna



Customer replaceable battery lowers operating costs

Contact

ejward.com/contact/



SF - Fuel Tag RB 05/2024